

2012

HERITAGE
WEEK
20-26
FEBRUARY
2012

Stave Falls Powerhouse

Energy. We need it to move, to see, to stay warm, to cook, and just to have fun. Without it, we couldn't work, build or grow. We need energy to live.

Finding, extracting and producing energy has been a big part of British Columbia's history. One of the earliest hydroelectric projects was located in the Fraser Valley. Drawing on the vast head of water in Stave Lake, the Western Canada Power Company built the Stave Falls Powerhouse and Dam between 1909 and 1911.

When a new powerhouse opened in 2000, there was the question of what to do with the historic facility next door. BC Hydro turned it into the Stave Falls Visitors Centre to showcase the history of electrical power generation in B.C. and provide a perspective on the future. Today the story is more about conserving energy to ensure a sustainable tomorrow, but we will always need power.

Painting by Robert Amos RCA 2011

HeritageBC



www.heritagebc.ca

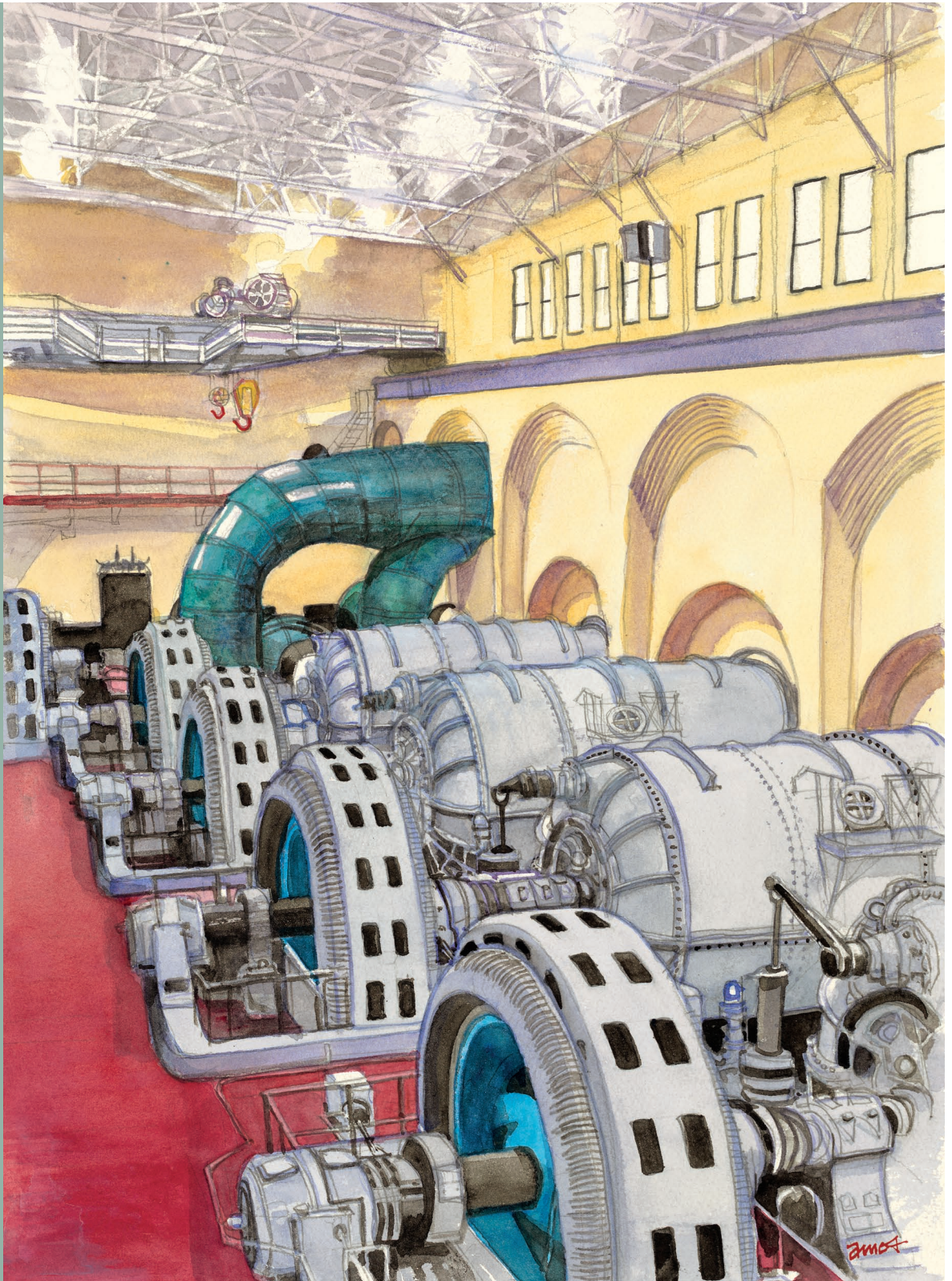
PUBLISHED BY
THE HERITAGE SOCIETY OF BRITISH COLUMBIA

FINANCIALLY ASSISTED BY
THE HERITAGE LEGACY FUND

SUPPORTED BY

BC HYDRO
POWER
PIONEERS

BC Hydro



Energy in B.C.
A Powerful Past, A Sustainable Future